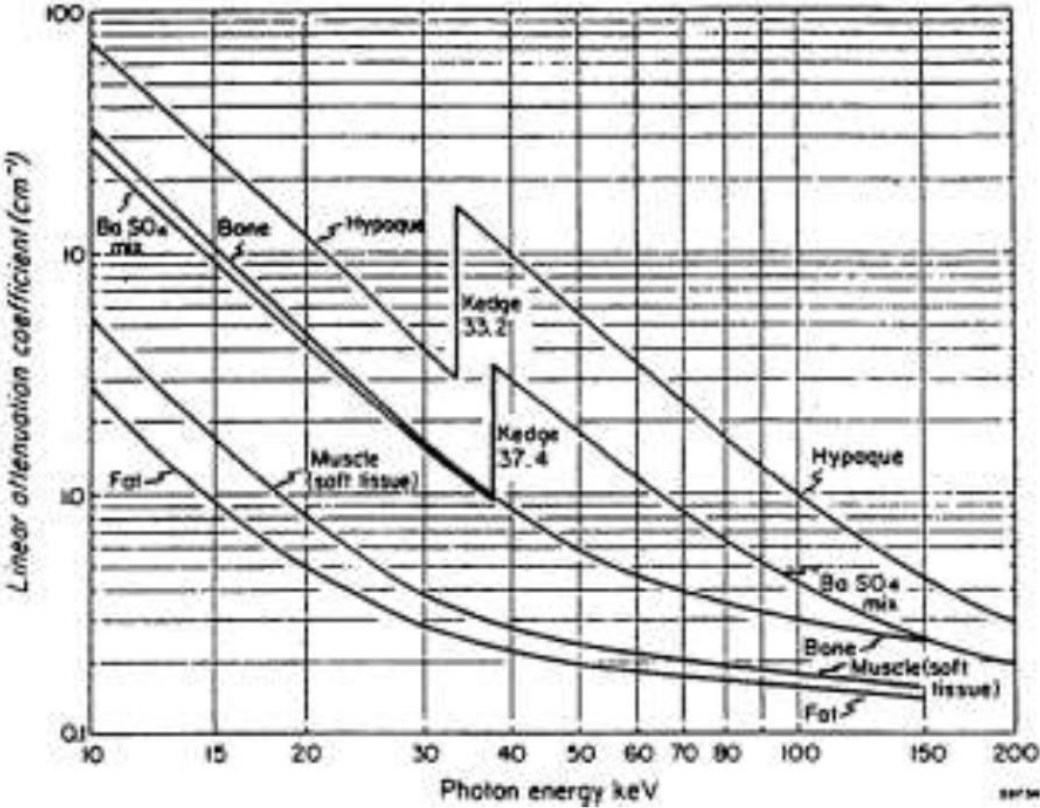
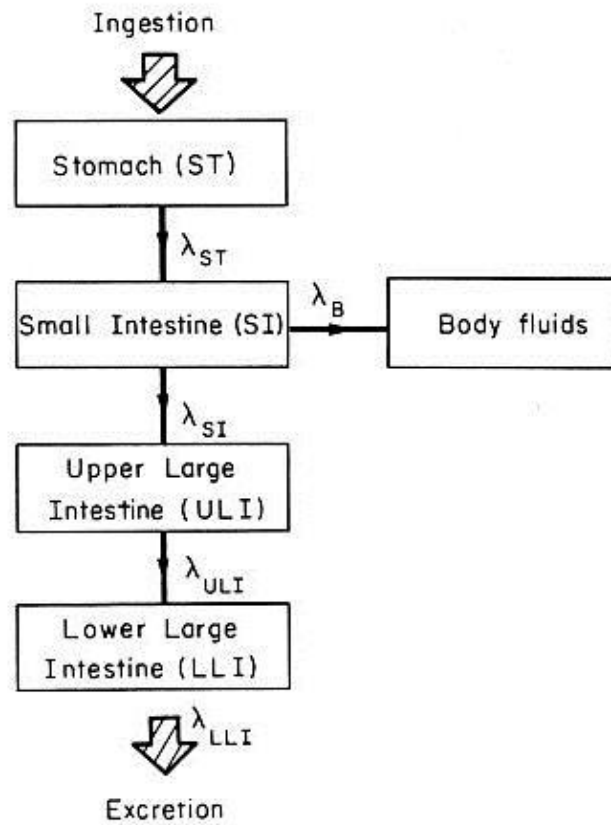


Sample questions Medical Physics

1. Explain based on the figure below what X-ray spectrum energy would be required for lung radiography



2. How are the biologic effects of ionizing radiation classified? Which dose quantities are used to quantify these effects?
3. Explain the figure below (what does this represent and how it can be applied for dosimetry)



4. Explain

- a. "CTDI"
- b. "LET"
- c. "DRL"
- d. "DSA"
- e. "SPECT"

5. Explain briefly how doses in external beam radiotherapy are determined.